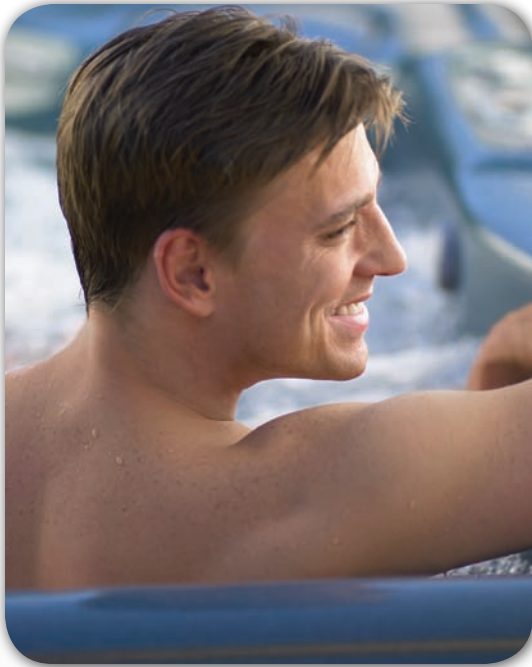


# dash™



<b>Seating Capacity</b>	6 adults
<b>Dimensions</b>	78" diameter x 35"H/1.98m x .89mH
<b>Water Capacity</b>	280 gallons/1,060 litres
<b>Weight</b>	350 lbs./156 kg dry; 3,435 lbs./1,558 kg filled*
<b>Spa Shell</b>	Polyethylene
<b>Lighting</b>	Blue LED light
<b>Jets - 17</b>	4 Directional Hydromassage jets 1 Rotary Hydromassage jet 7 Precision Directional Hydromassage jets 5 Precision Rotary Hydromassage jets
<b>Control System</b>	115v/20 amp, 60 Hz or 115v/30 amp Includes G.F.C.I. protected power cord
<b>Heater</b>	No-Fault® 1000w/115v
<b>Jet Pump</b>	Wavemaster® 4000; Two-speed, 1.5 HP Continuous Duty, 3.2 HP Breakdown Torque
<b>Ozone System (Optional)</b>	FreshWater® III Corona Discharge
<b>Effective Filtration Area</b>	50 sq. ft., top loading
<b>Vinyl Cover</b>	3.5" to 2.5" tapered, 1.5 lb. density foam core Ash or Rust

\*Includes water and 6 adults weighing 175 lbs. each

